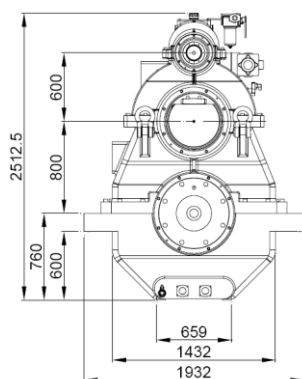
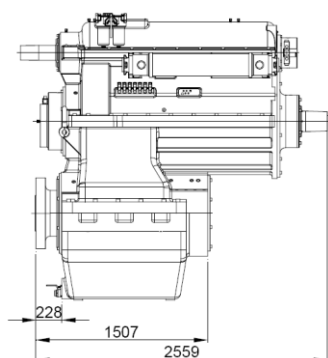


mekanord marinegearbox

800D



| Reduction Ratio | Power Factor kW/RPM | Input Shaft Diameter mm |
|-----------------|---------------------|-------------------------|
| 2,95-3,58:1 | 9,90 | 180 |
| 4,16:1 | 8,80 | 180 |
| 4,33:1 | 7,60 | 180 |
| 4,95:1 | 7,00 | 180 |
| 5,59:1 | 5,80 | 180 |
| 6,15:1 | 4,50 | 180 |

PTO/PTI:

PTO/PTI with free shaft

PTO max step-up 1:2,24

PTI max step-up 1:3,21

Max torque from PTO: 4000 Nm

Max torque from PTO/PTI: 8500 Nm

Weight:

Approx. 14300 kg

Gearbox:

- Prepared for OD system
- Compact design
- Large economical reduction ratio
- Option of PTO/PTI with individual hydraulic clutches
- Rigid cast iron housing
- Helical ground gearwheels in casehardened and highly alloyed steel
- Hydraulic multi-plate clutch
- Oil system with direct/electric driven oil pump, cooler, filter, valves etc.
- Pressure lubricated spherical roller bearings
- Designed according to the rules of the classification societies
- Each gearbox is tested and approved in test bed